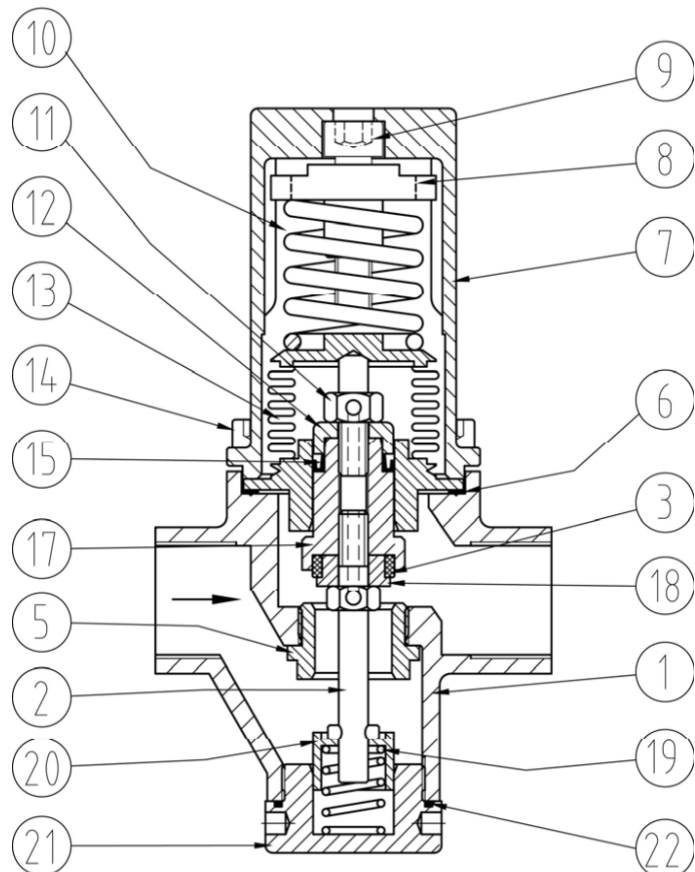


Pressure Reducing Valve - Model PRV54

BASIC INFORMATION

Type	Self-operated pressure reducing valve with piston	Kv	2, 2.5 and 3.0 [m ³ /h]-[bar]
Operation	Valve tends to close when outlet pressure increases	Cv	2.3, 2.9 and 3.5 [gpm]-[psi]
Model	PRV45	Temperature	-10 to 180° [°C]
Connections	Flanged (DIN - ANSI) or Threaded (BSP - NPT)		14 to 356 [°F]
Ends	RF – RF, NPT, BSP	Inlet max. pressure	16 [barg]
Ratings	PN16 (150#)	Outlet pressure	0,2- 8 [barg]
Sizes	DN15, DN20 and DN25 (1/2", 3/4" and 1")	Suitable for	Steam, compressed air, water and neutral gases

PARTS



MATERIALS

REF.	PART	MATERIAL	
		ANSI / ASTM	DIN / EN
1	Body	S.S. (AISI 316L)	S. S. (1.4404)
2	Seal screw	S. S. (AISI 304)	S.S (1.4301)
3	Seal	Graphite PTFE	Graphite PTFE
4	Gasket	PTFE (D-792)	PTFE (53749)
5	Seat	S.S. (AISI 304L)	S. S.(1.4307)
6	Gasket	Graphite PTFE	Graphite PTFE
7	Spring cover	S.S. (AISI 316L)	S. S. (1.4404)
8	Washer spring	S.S. (AISI 1025)	S.S. (1.1158)
9	Regulation screw	S. S. (AISI 304)	S.S (1.4301)
10	Regulation spring	C.S. (52SiCrNi5)	C.S. (1.7117)
11	Bellow screw	S.S. (AISI 316L)	S.S. (1.4404)
12	Gasket cover	S.S. (AISI 316L)	S.S. (1.4404)
13	Bellow kit	S.S. (AISI 316L)	S.S. (1.4404)
14	Allen screw	S. S. (AISI 304)	S.S (1.4301)
15	Gasket	Graphite PTFE	Graphite PTFE
17	Stem	S.S. (AISI 316L)	S.S. (1.4404)
18	Guide seal	S.S. (AISI 316L)	S.S. (1.4404)
19	Seal spring	S.S. (AISI 302)	S.S (1.43)
20	Spring guide	S.S. (AISI 316L)	S.S. (1.4404)
21	Lower cover	S.S. (AISI 304L)	S. S.(1.4307)
22	Gasket	PTFE (D-792) NBR (D-1418)	PTFE (53749) NBR (1629)

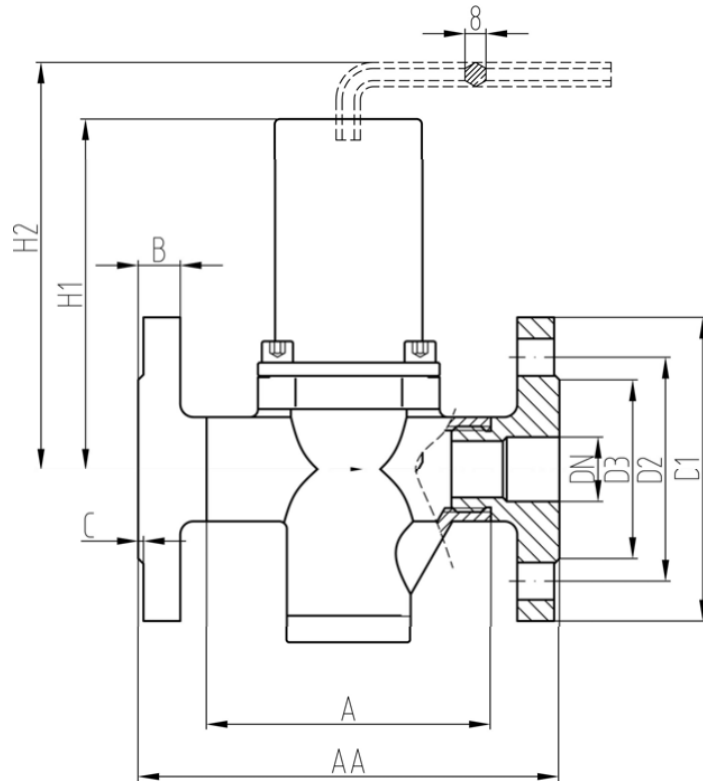
Special gasket for special fluid on demand

STANDARD CONFIGURATIONS

DN [mm]	15	20	25
Kv [m3/h]-[bar]	2.0	2.5	3.5

NPS [inch]	1/2"	3/4"	1"
Cv [gpm]-[psi]	2.5	3	3.5

AA [mm] EN	140	150	160
AA [mm] ANSI 150	140	150	160
H1 [mm]	135	135	135
H2 [mm]	185	185	185
D1 [mm] EN	95	105	115
D1 [mm] ANSI 150	89	98	108
D2 [mm] EN	65	75	85
D2 [mm] ANSI 150	60.5	70	79.5
D3 [mm] EN	45	58	68
D3 [mm] ANSI 150	35	43	51
B [mm] EN	16	16	16
B [mm] ANSI 150	12	12	12
C [mm]	2	2	2
Nº Holes	4	4	4
Ø [mm] EN	14	14	14
Ø [mm] ANSI 150	16	16	16
Weight [Kg] EN	2.5	2.5	2.5
Weight [Kg] ANSI150	5	5	5

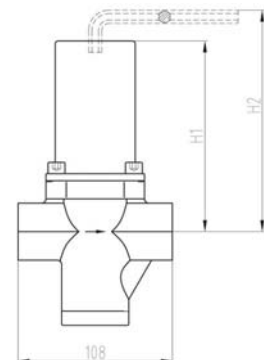


IMPORTANT NOTE: Kv or CV reduced is available

In red color, sizes out of standards

THREADED BSP OR NPT (FEMALE)

DN [mm]	15	20	25
Kv [m3/h]-[bar]	2,0	2,5	3,5
Cv [gpm]-[psi]	2,5	3	3,5
A [mm]	108	108	108
Weight [Kg]	2,5	2,5	2,5



Disclaimer

The information, specifications and technical data contained in this catalogue are subject to change without notice by the manufacturer. The user should verify all technical data and specifications prior to use. EFSVALVES does not warrant that the material and information contained herein is current or correct and assumes no responsibility for the use or misuse of any such material and information by the user.