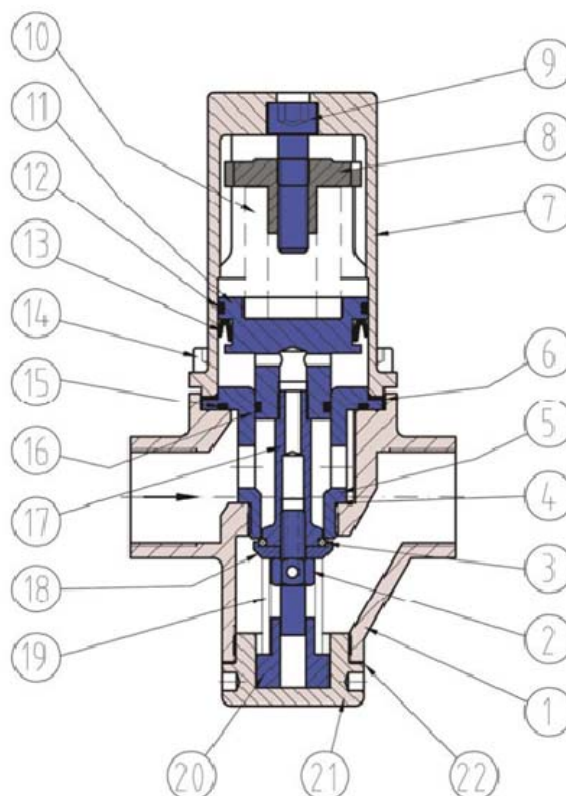


Pressure Reducing Valve - Model PRV30

BASIC INFORMATION

Type	Self-operated pressure reducing valve with piston	Kv	2, 2.5 and 3.0 [m ³ /h]-[bar]
Operation	Valve tends to close when outlet pressure increases	Cv	2.3, 2.9 and 3.5 [gpm]-[psi]
Model	PRV30	Temperature	0 to 220° [°C] 32 to 428 [°F]
Connections	Flanged (DIN - ANSI) or Threaded (BSP - NPT)	Inlet max. pressure	16 [barg]
Ends	RF – RF, NPT, BSP	Outlet pressure	0,2 - 9 [barg]
Ratings	PN16 (150#)	Suitable for	Liquids, compressed air, neutral gases and steam
Sizes	DN15, DN20 and DN25 (1/2", 3/4" and 1")		

PARTS



MATERIALS

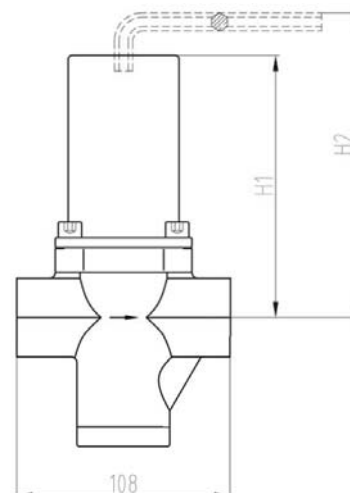
REF.	PART	MATERIAL	
		ANSI /ASTM	DIN / EN
1	Body	C. S. (A216WCC) S.S. (AISI 316)	C. S. (1.0619) S. S. (1.4408)
2	Seal screw	S.S. (AISI 316)	S. S. (1.4408)
3	Seal	NBR (D-1418)	NBR (1629)
4	Gasket	PTFE (D-792)	PTFE (53749)
5	Seat	S. S. (AISI 304)	S.S (1.4301)
6	Gasket	PTFE (D-792)	PTFE (53749)
7	Spring cover	S. S. (AISI 304)	S.S (1.4301)
8	Washer spring	C. S. (AISI 1025)	C.S (1.1158)
9	Regulation screw	S. S. (AISI 304)	S.S (1.4301)
10	Regulation spring	C.S. (52SiCrNi5)	C.S. (1.7117)
11	Piston	S. S. (AISI 304)	S.S (1.4301)
12	O-ring	NBR (D-1418)	NBR (1629)
13	Gasket	NBR (D-1418)	NBR (1629)
14	Screw (x4)	S. S. (AISI 304)	S.S (1.4301)
15	O-ring	NBR (D-1418)	NBR (1629)
16	O-ring	NBR (D-1418)	NBR (1629)
17	Stem	S. S. (AISI 304)	S.S (1.4301)
18	Guide steal	S. S. (AISI 304)	S.S (1.4301)
19	Seal spring	S.S. (AISI 302)	S.S (1.43)
20	Guide seal screw	S. S. (AISI 304)	S.S (1.4301)
21	Lower cover	S. S. (AISI 304)	S.S (1.4301)
22	Gasket	NBR (D-1418)	NBR (1629)

DIMENSIONS AND K_v

DN [mm]	15	20	25
NPS [inches]	½"	¾"	1"

K_v	2.0	2.5	3.0
C_v	2.3	2.9	3.5

A [mm]	108	108	108
H1 [mm]	135	135	135
H2 [mm] (H1 + ALLEN 8)	185	185	185
Weight [Kg.]	2,5	2,5	2,5

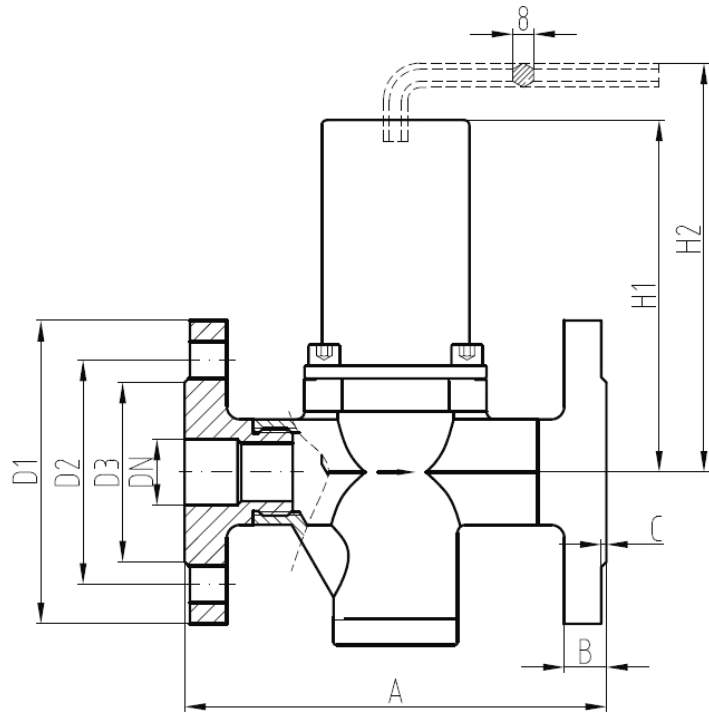


STANDARD CONFIGURATIONS

DN [mm]	15	20	25
Kv [m ³ /h]-[bar]	2,0	2,5	3,0

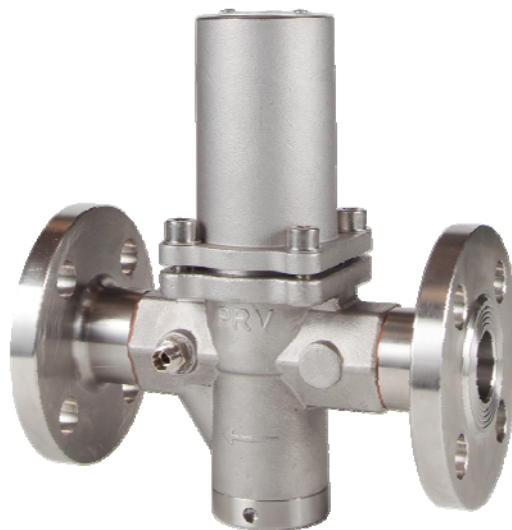
NPS [inch]	1/2"	3/4"	1"
Cv [gpm]-[psi]	2,5	3	3,5

A [mm] EN	140	150	160
A [mm] ANSI 150	140	150	160
H1 [mm]	135	135	135
H2 [mm]	185	185	185
D1 [mm] EN	95	105	115
D1 [mm] ANSI 150	89	98	108
D2 [mm] EN	65	75	85
D2 [mm] ANSI 150	60,5	70	79.5
D3 [mm] EN	45	58	68
D3 [mm] ANSI 150	35	43	51
B [mm] EN	16	16	16
B [mm] ANSI 150	12	12	12
C [mm]	2	2	2
Nº Holes	4	4	4
Ø [mm] EN	14	14	14
Ø [mm] ANSI 150	16	16	16
Weight [Kg]	5	5	5



IMPORTANT NOTE: Kv or CV reduced is available

In red color, sizes out of standards



OPERATION

PRV concept is direct action. Inlet pressure comes into the valve and closes it **because of the sections difference**.

When we compress the spring (10) through the regulating screw (9), the stem-seal (11, 17 and 3) opens the valve and allows the regulation.

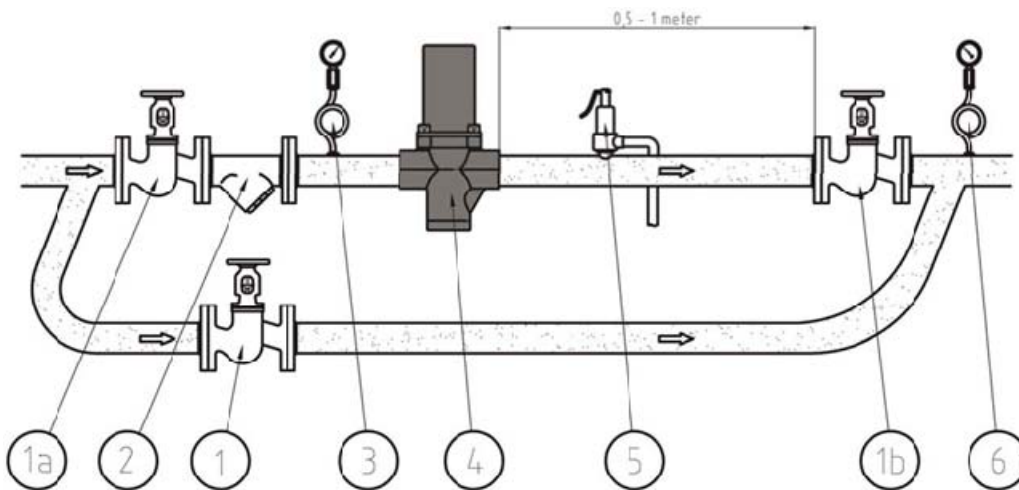
When any downstream valve is closed and flow=0, PRV will absorb the oscillations and keep the outlet pressure according to the regulation.

The valve closes when the downstream pressure exceeds the regulating set pressure.

It is recommended to leave a space (between 0,5 and 1 meter) until the c heck valve, for a better compensation.

To increase outlet pressure, the regulating screw (9) should be turned anticlockwise.

STANDARD INSTALLATIONS



- | | |
|-----|-----------------------------|
| 1. | Check Valve |
| 1a. | Check Valve |
| 1b. | Check Valve |
| 2. | Filter |
| 3. | Inlet pressure Manometer |
| 4. | Pressure reducing valve PRV |
| 5. | Safety valve |
| 6. | Outlet pressure Manometer |



ATEX approved

Disclaimer

The information, specifications and technical data contained in this catalogue are subject to change without notice by the manufacturer. The user should verify all technical data and specifications prior to use. EFSVALVES does not warrant that the material and information contained herein is current or correct and assumes no responsibility for the use or misuse of any such material and information by the user.